



## 15 Osborne Mews

, Barnsley, S70 1UU

Offers Over £80,000



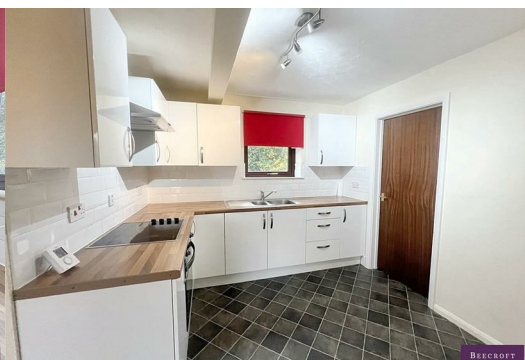
SELLING WITH SITTING TENANT PAYING £ 675PCM.

Charming Two-Bedroom Flat in the Heart of Barnsley Town Centre No hidden big apartment service charges !!!(Only £5 a year peppercorn)

Nestled in the vibrant heart of Barnsley Town Centre, this well presented two-bedroom flat offers modern living with a touch of elegance.

The flat features two well-proportioned bedrooms, bathroom suite, semi open plan lounge/dining kitchen an balcony.

With its prime location, modern features, and inviting interiors, this delightful flat is an excellent opportunity for investors alike. Don't miss the chance to make it your own —schedule a viewing today!

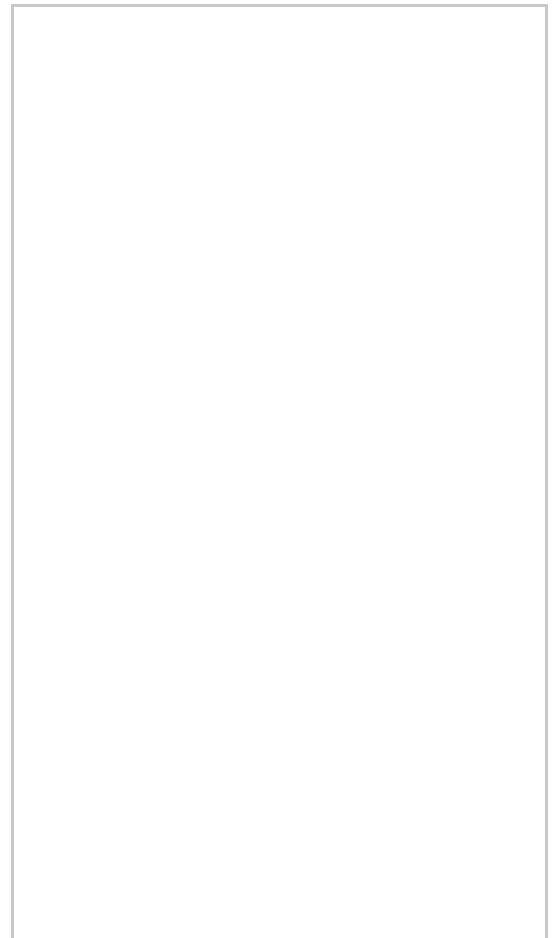


- Entrance Hall
- Lounge/Diner
- Kitchen
- Utility Room
- Bedroom One
- Bedroom Two
- Bathroom

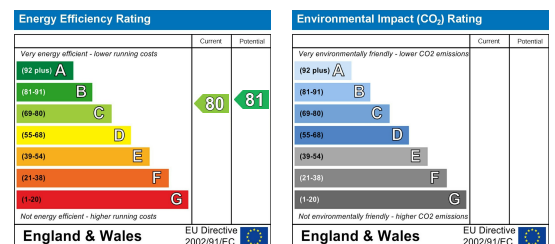
## Area Map



## Floor Plans



## Energy Efficiency Graph



These particulars, whilst believed to be accurate are set out as a general outline only for guidance and do not constitute any part of an offer or contract. Intending purchasers should not rely on them as statements of representation of fact, but must satisfy themselves by inspection or otherwise as to their accuracy. No person in this firm's employment has the authority to make or give any representation or warranty in respect of the property.